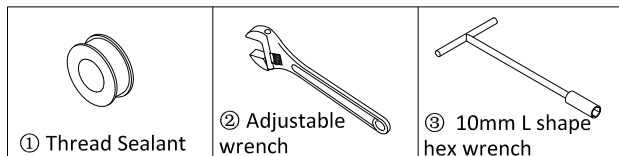
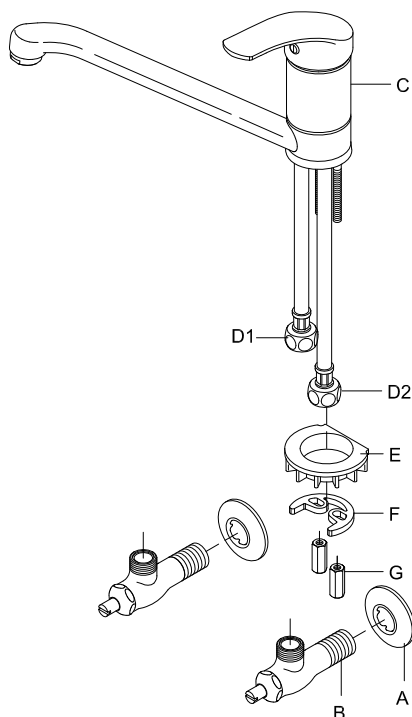


KNN1139, KNN1159 Single Lever Kitchen Faucet Installation Instructions

Tools and Materials



Names of Component

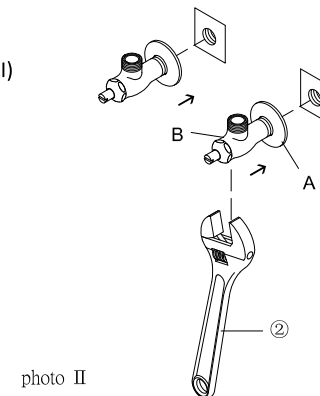
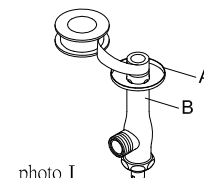


| NO | NAME |
|----|------------------------|
| A | Flange Cover |
| B | Angle Stop Valve |
| C | Faucet (Mixer Body) |
| D | Braided hoses (D1, D2) |
| E | Washer |
| F | Brass washer |
| G | Fixing Screws |

Installation process

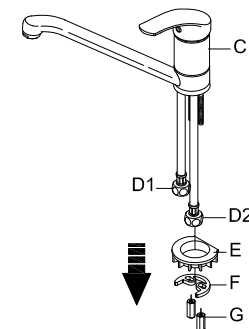
(1)

Install B into A, then apply pipe sealant to threads on B (photo I.) Wrenched B+A to water supply hose (photo II)



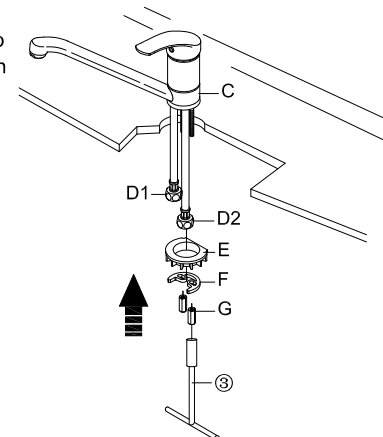
(2)

Release G, E, F from faucet C.



(3)

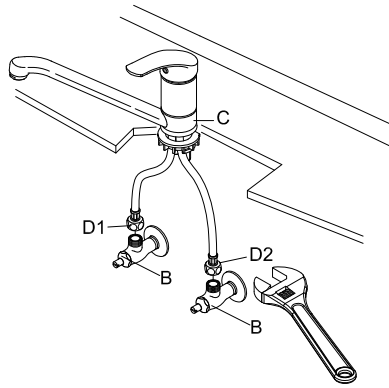
Put faucet C on the deck and let the braided hoses go through the setting hole of the deck. Placing E, F, G in order. Then wrench G tightly by "10mm L shape hex wrench." Then make sure faucet body C stands on the deck firmly.



Installation process

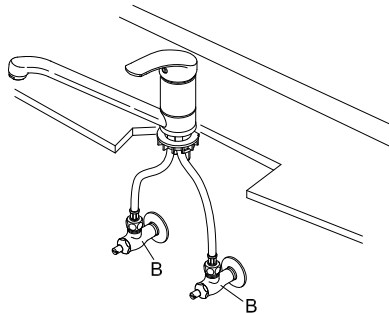
(4)

Insert D1 on the hot side Angle stop valve B, and D2 on the cold side. Wrench the nut tightly on the angle vale.



(5)

Installation finished. (Turn on the shaft of the angle stop valve B.)



Usage instruction

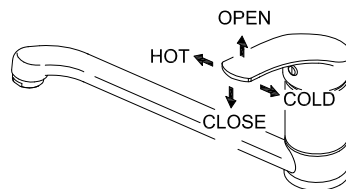
(1) Handle be push down- dispensing water off

Handle be pull up-

dispensing water on

Pull to the right- cold water

Pull to the left- hot water



Maintain and Cleaning

(1) Day to day basis: Drying our faucets with a soft cloth immediately after using them.

(2) Spraying our faucets with mild cleaner (PH value = 7), followed by cleaning them with water then drying them with a dried- soft cloth.

(3) Aerator which be installed at spout of faucet should be taken off and cleaned in case mineral deposits blocked the filtered net. It will cause the volume of water given decreased .

