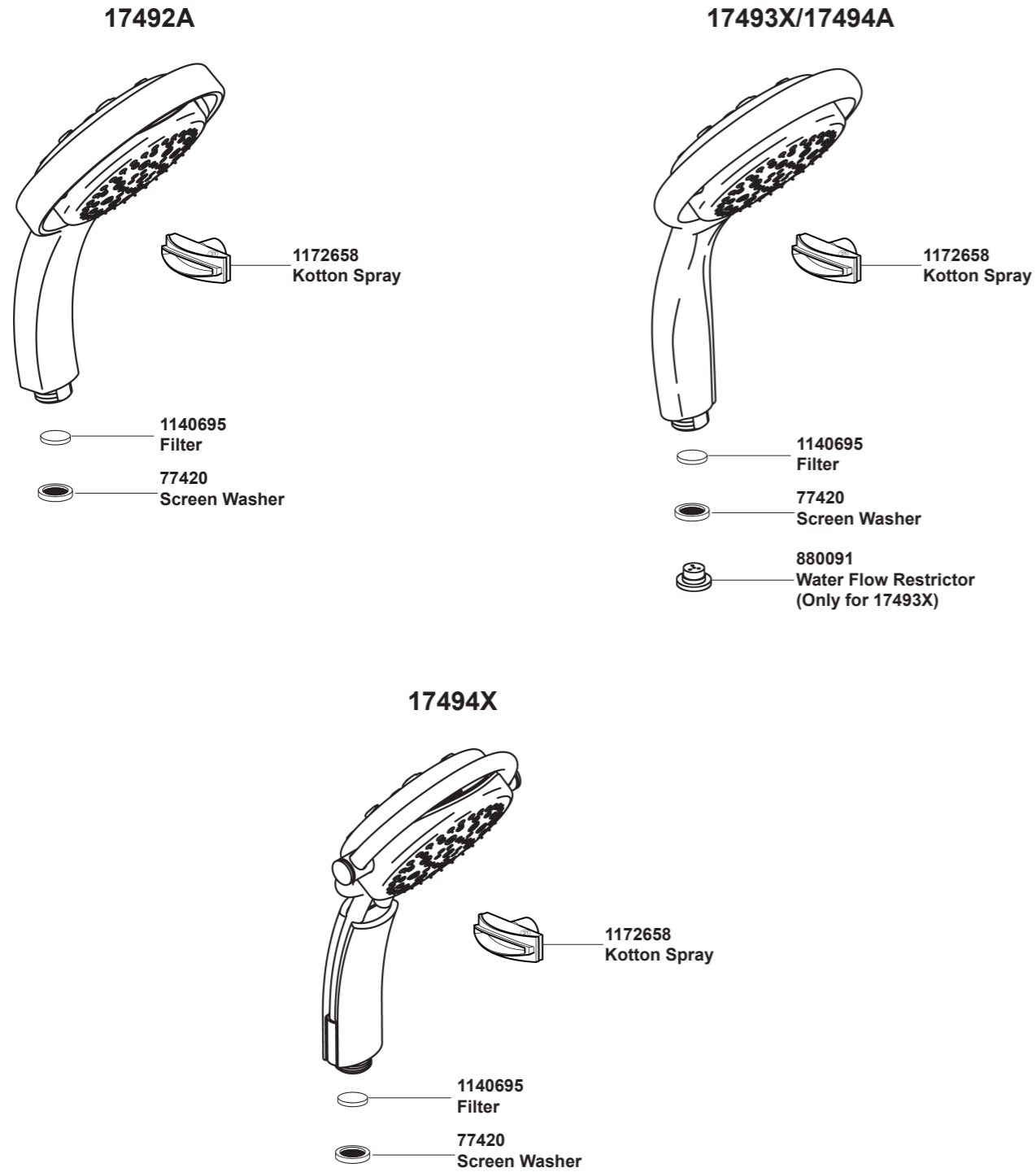


17492 17493 17494 MULTI-FUNCTION HANDSHOWER



**Color code must be specified when ordering

17492 17493 17494 MULTI-FUNCTION HANDSHOWER

BEFORE YOU BEGIN

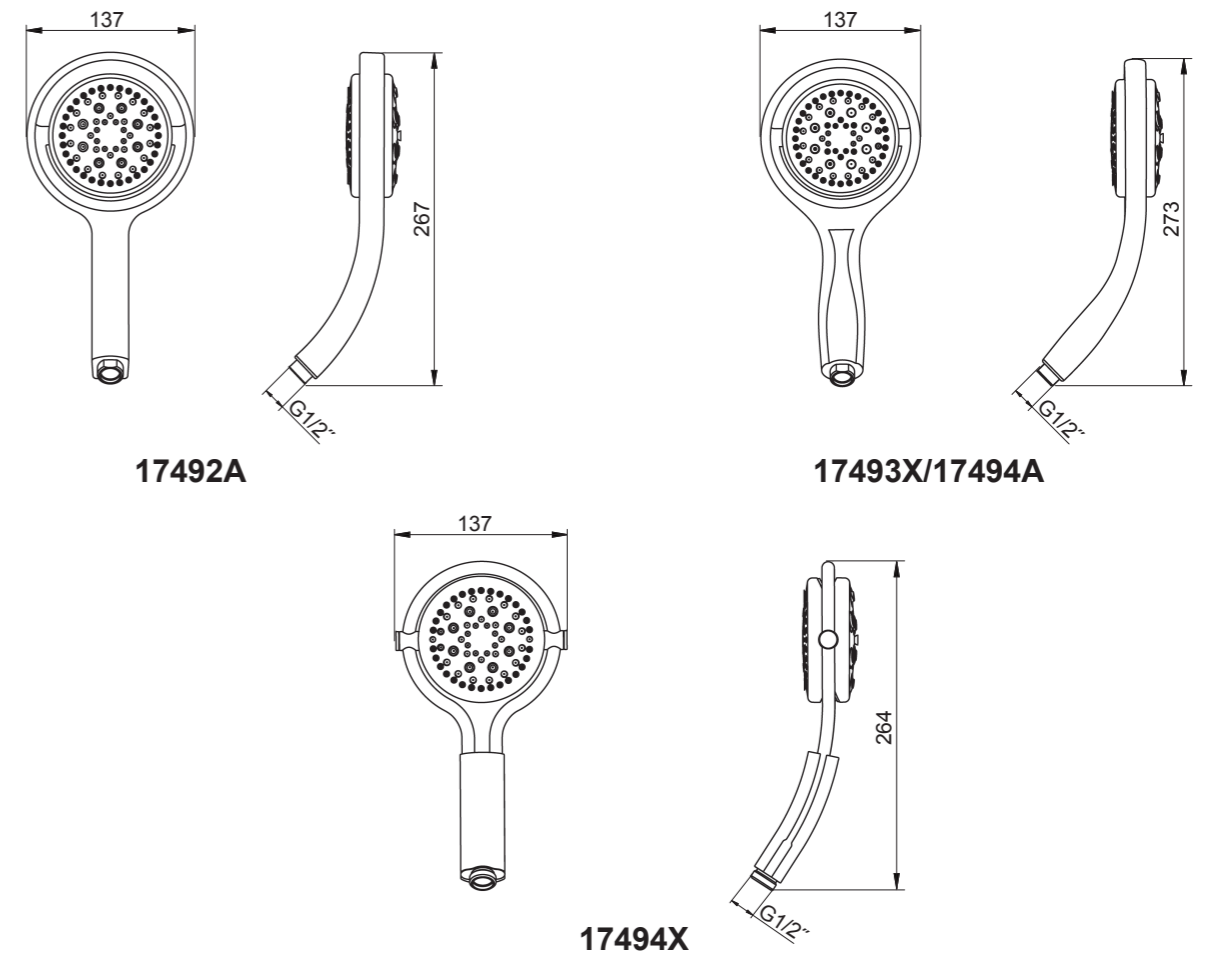
All information is based on the latest product information available at the time of publication. Kohler Co. reserves the right to make changes in product characteristics, packaging, or availability at any time without notice.

Please leave these instructions for the consumer. They contain important information.

NOTES:

1. Flush the water supply pipes thoroughly to remove debris.
2. An in line water filter must be used with this product.
3. The highest working pressure for handshower & shower head is 0.5MPa(5 bar). If it exceeds 0.5MPa(5 bar), a pressure reducer is needed. The highest water and environment temperature is 60°C. Please keep handshower, shower head and the shower arm away from heater, or it may become damaged and cause injury to the user.
4. Don't remove the flow controller, or the handshower will be damaged.
5. Working pressure for handshower: 1 to 5 bar.

ROUGH-IN DIMENSIONS

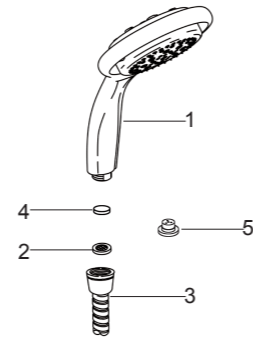


INSTALLATION

How To Install The Handshower

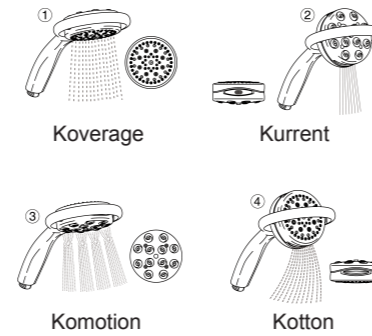
For 17493X only, put the water flow restrictor(5) into the handshower(1) inlet; Don't remove the regulator of the handshower(1).

Put the screen washer(2) into the shower hose(3, not provided) connector, put the filter(4) into the handshower, screw the handshower to the shower hose. Connect another end of shower hose to the water supply.



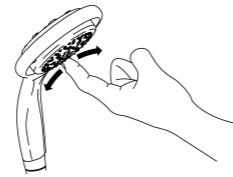
OPERATING INSTRUCTIONS

Rotate the head of the handshower to change the spray patterns as shown.



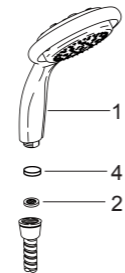
How To Clean The Nozzles

Any debris or mineral build-up may cause the flow stream to become distorted or reduce the flowrate. To remove the debris or mineral build-up, run water through the handshower, firmly press or rub your finger back and forth across the rubber nozzles.



How To Clean The Screen Washer

Remove the handshower(1). Take out the screen washer(2) and the filter(4) from the handshower. Clean the filters of the screen washer by soaking them in warm vinegar. Clean the screen washer and filter. Reinstall the filter and screen washer into the handshower. Reinstall the handshower.



How To Clean The Kotton Spray

Use a suitable tool to remove the four grommets.

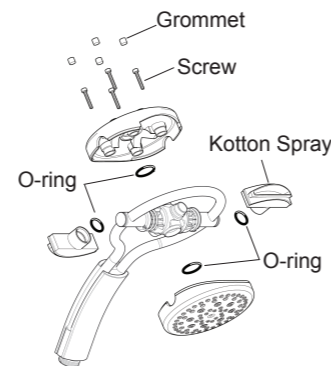
Using the 2.5mm hexagon wrench(not supplied), remove the four screws.

Separate the sprayplate assembly into its individual components.

Clean the kotton spray by soaking them in warm vinegar for 30 minutes.

NOTE: Make sure that the o-rings are located correctly.

Reassemble the components in reverse order.



CLEANING INSTRUCTIONS

All Finishes: Clean the finish with mild soap and warm water. Wipe entire surface completely dry with clean soft cloth. Many cleaners may contain chemicals, such as ammonia, chlorine, toilet cleaner etc. which could adversely affect the finish and are not recommended for cleaning.

Do not use abrasive cleaners or solvents on Kohler faucets and fittings.