
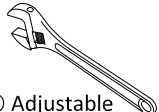
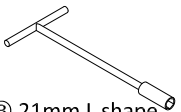
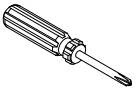


KPU1419

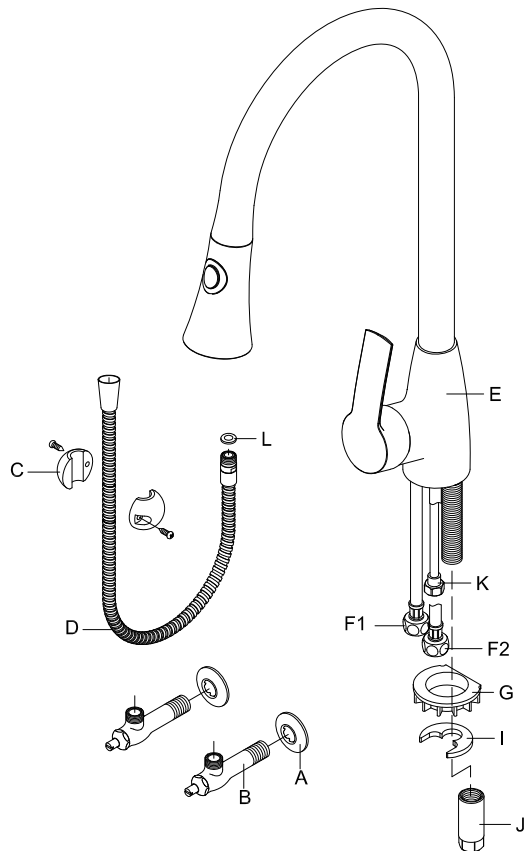
Pull-out Kitchen Faucet

Installation Instructions

Tools and Materials

			
① Thread Sealant	② Adjustable wrench	③ 21mm L shape hex wrench	④ Phillips screwdriver

Names of Component

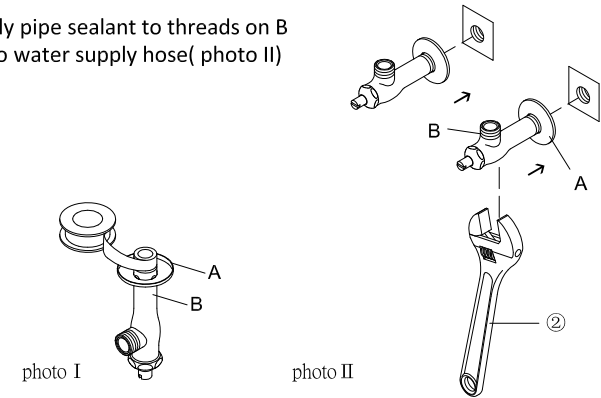


NO	NAME
A	Flange Cover
B	Angle Stop Valve
C	Hose weight
D	Pullout hose
E	Faucet (Mixer Body) Washer
F	Braided hoses (F1, F2)
G	Plastic Washer
I	Brass washer
J	Fixing Screws
K	Pull-out hose connect tube
L	RUBBER PACKING

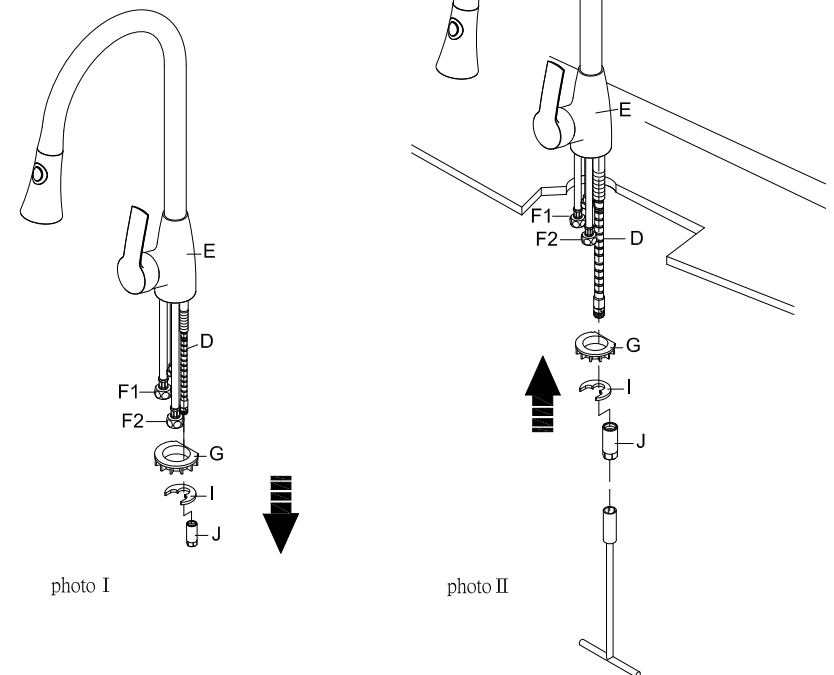
Installation process

(1)

1)Install B into A, then apply pipe sealant to threads on B (photo I.) Wrenched B+A to water supply hose(photo II)



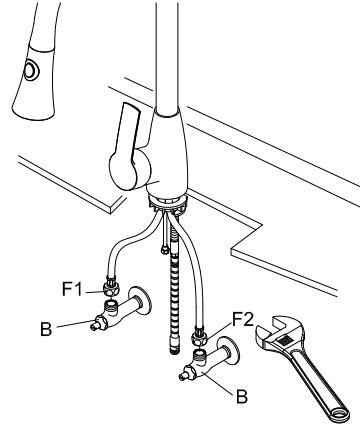
(2) Release J,I,G from faucet E.(Please refer to photo. I) Put faucet E on the deck and let the braided hoses go through the setting hole of the deck. Placing G,I,J in order . Then wrench J tightly by "21mm L shape hex wrench." Then make sure faucet E stands on the deck firmly. (Please refer to photo II)



Installation process

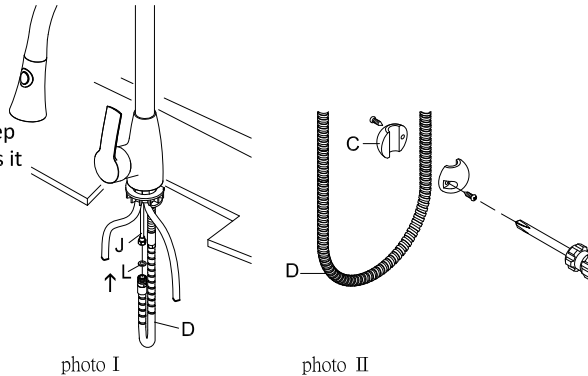
(4)

Insert F1 on the hot side Angle stop valve B, and F2 on the cold side. Wrench the nut tightly on the angle vale.



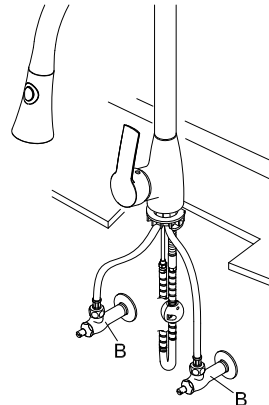
(5)

D connect to the pullout hose J. (Please refer to photo I)
Install the hose weight C onto the pullout hose D (the weight helps keep the hose from tangling and it makes it easier to retract).



(6)

Installation finished. (Turn on the shaft of the angle stop valve B.)



Usage instruction

(1) Handle be pull forward- dispensing water on

Handle be push back-
dispensing water off

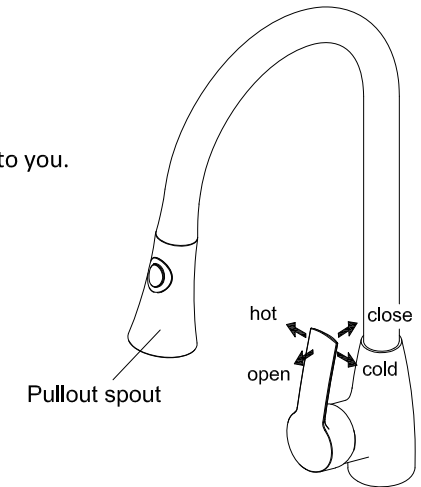
Pull to the right- cold water

Pull to the left- hot water

(2) Pull out the spout

Hold the pullout spout and pull forward to you.

It gives you far more flexibility.



Maintain and Cleaning

(1)

Day to day basis: Drying our faucets with a soft cloth immediately after using them.

(2) Spraying our faucets with mild cleaner (PH value = 7), followed by cleaning them with water then drying them with a dried- soft cloth.

(3) Aerator which be installed at spout of faucet should be taken off and cleaned in case mineral deposits blocked the filtered net. It will cause the volume of water given decreased .

